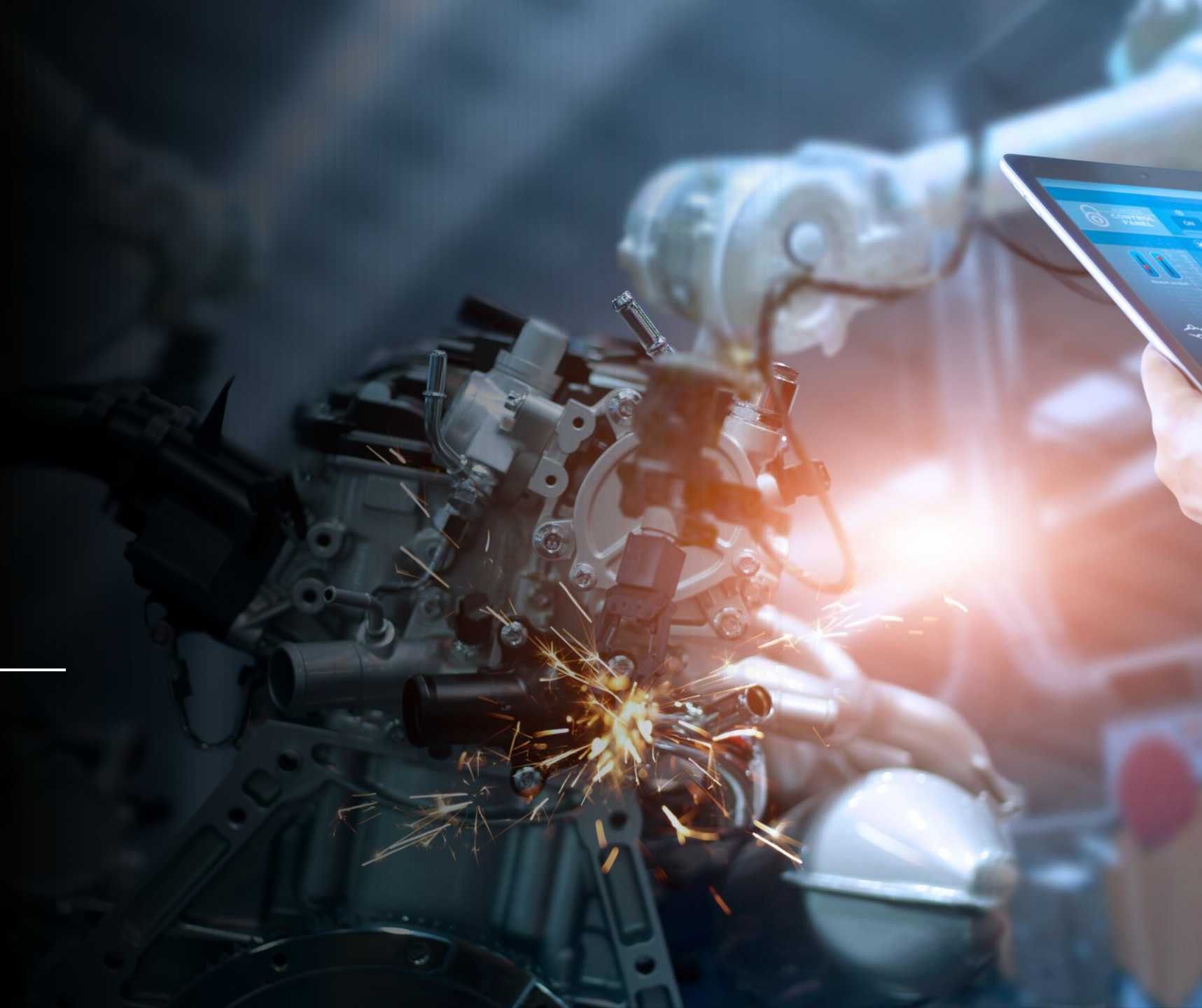
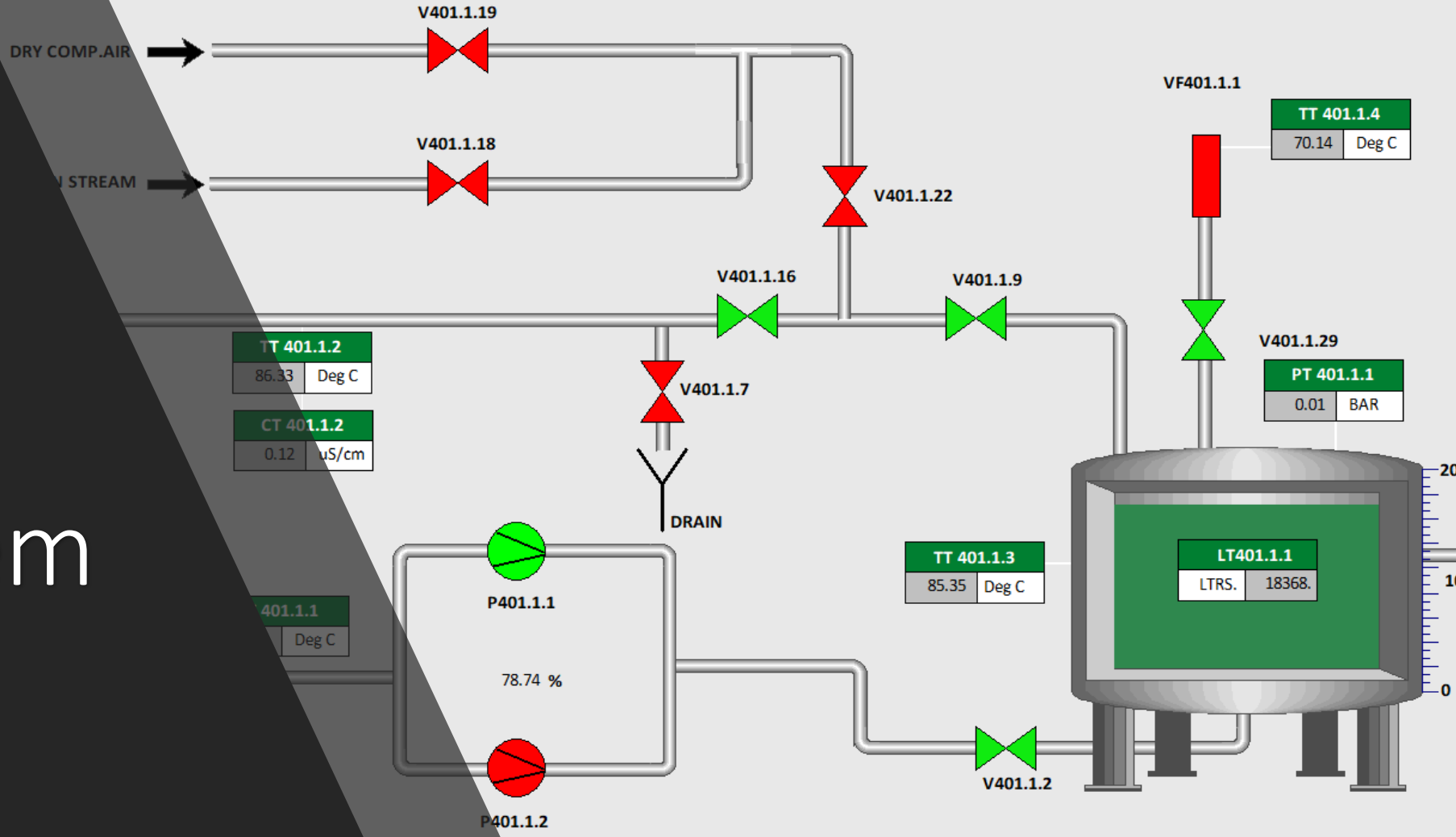




Nexion Automation Pvt. Ltd.



OPERATION



TT 401.1.2
85.33 Deg C
CT 401.1.2
0.12 uS/cm

401.1.1
Deg C

TT 401.1.3
85.35 Deg C

TT 401.1.4
70.14 Deg C

PT 401.1.1
0.01 BAR

LT401.1.1
LTRS. 18368.

WFI System

OSMOTRON MIMIC-1
 NORMAL MODE, PRESS START
 12-05-2022 16:46:43
 SOFT STOP 0.00 HARD STOP 0.00

PSG MIMIC
 PROCESS OK
 12-05-2022 16:55:54

The left column shows two screenshots of control panels. The top one is for OSMOTRON MIMIC-1, displaying a schematic of a water treatment process with various tanks and pipes. The bottom one is for PSG MIMIC, showing a similar process with different components like heaters and filters.

OSMOTRON MIMIC-2
 NORMAL MODE, PRESS START
 12-05-2022 16:46:43
 0.00 0.00
 SOFT STOP HARD STOP

Process Data:

- QT 201.5.1: 2.51 uS/cm
- TT 201.5.2: 31.86 Deg C
- PT 201.6.1: 0.02 BAR
- FIT 201.6.1: 0.00 LPH
- QT 201.6.1: 0.00 uS/cm
- TT 201.6.1: 32.36 Deg C
- PT 201.6.3: 0.03 BAR
- FIT 201.6.2: 0 LPH
- QT 201.6.2: 210.00 uS/cm
- PT 201.6.2: 0.00 BAR
- FIT 201.6.2: 0 LPH
- ET 201.6.13: 0.01 A
- ET 201.6.12: 0.01 A
- ET 201.6.11: 0.01 A
- P201.6.1: 0 %
- V201.6.5: 0 %
- V201.6.9: (Status)

Buttons: BACK, AUTO, START, +1, MANUAL MODE, ALARMS

The right column shows a detailed screenshot of the OSMOTRON MIMIC-2 control panel. It features a complex schematic of a water treatment system with multiple tanks (B201.6.1, B201.6.2, B201.6.3), pipes, and valves (V201.5.5, V201.6.1, V201.6.3, V201.6.4, V201.6.5, V201.6.9). The interface includes a top navigation bar, a central data display area, and a bottom control bar with buttons for BACK, AUTO, START, +1, MANUAL MODE, and ALARMS.

Screens

Reports



AHLCON PARENTERALS (INDIA) LTD
(A B/BRAUN GROUP CO.)
Alarm Report



In Time	Acknowledge Time	Out Time	Comment
20-07-2022 18:53:19		20-07-2022 18:53:37	PSG SYSTEM BOI. STEAM TEMP. LOW
20-07-2022 19:10:27		22-07-2022 10:47:30	PSG SYSTEM PURE STEAM PRESSURE LOW
20-07-2022 20:32:18		21-07-2022 02:26:23	MCDP-2 INSUFFICIENT FEED WATER
21-07-2022 07:33:20		21-07-2022 07:33:34	PSG SYSTEM BOI. STEAM TEMP. LOW
21-07-2022 08:17:56		21-07-2022 09:09:38	MCDP-2 INSUFFICIENT FEED WATER
21-07-2022 09:36:08		21-07-2022 09:37:19	A QT201 12 1 LOW
21-07-2022 09:37:02			A P201 5 4 PRESS LOW
21-07-2022 15:58:54		21-07-2022 16:39:11	A TT401 1 2 LOW
21-07-2022 16:03:52		21-07-2022 16:05:05	A CT401 1 2 CONDOC HIGH
21-07-2022 16:04:32			A CT401 1 2 CND VERYHIGH
21-07-2022 17:12:07		22-07-2022 10:17:55	MCDP-2 INSUFFICIENT FEED WATER
22-07-2022 09:15:04		22-07-2022 09:17:39	A TANK LL P401 1 1 STPD



AHLCON PARENTERALS (INDIA) LTD
(A B/BRAUN GROUP CO.)
PSG REPORT



DATE & TIME	TEMPERATURE			CONDUCTIVITY		PRESSURE	STATUS
	TS1 (°C)	TS2 (°C)	TS3 (°C)	CS1 (µS/cm)	CS2 (µS/cm)	PT1 (Kg/cm ²)	
	BOILER STEAM	PURE STEAM	GRC	FEED WATER	PURE STEAM	PT	
11.05.2022 09:23	149.60	109.50	70.20	0.03	0.50	0.46	PURGING ON PROBLEM
11.05.2022 09:24	152.10	109.50	69.90	0.02	0.10	0.46	BOI. STEAM TEMP. LOW
11.05.2022 09:25	153.50	108.30	71.50	0.04	0.10	0.38	BOI. STEAM TEMP. LOW
11.05.2022 09:26	156.20	108.00	70.40	0.03	0.10	0.40	PURE STEAM PRESSURE LOW
11.05.2022 09:27	158.20	107.70	70.00	0.03	0.10	0.39	GRC TEMP LOW
11.05.2022 09:28	146.40	107.20	71.30	0.04	0.10	0.37	PURE STEAM PRESSURE LOW
11.05.2022 09:29	146.90	107.20	71.00	0.04	0.10	0.38	PURE STEAM PRESSURE LOW
11.05.2022 09:30	151.70	108.40	71.00	0.04	0.10	0.46	PURE STEAM PRESSURE LOW



AHLCON PARENTERALS (INDIA) LTD (A B/BRAUN GROUP CO.)
OSMOTRON 9500 SELECT



DATE & TIME	FLOW				CONDUCTIVITY			pH	STATUS
	FIT201.5.1 (LPH)	FIT201.5.2 (LPH)	FIT201.6.1 (LPH)	FIT201.6.2 (LPH)	QT201.5.1 (µS/cm)	QT201.6.1 (µS/cm)	QT201.6.2 (µS/cm)	QT201.12.1	
	RO INLET FL	RO REJECT FL	SEP. INLET FL	SEP. CONC. FL	RO OUTLET COND.	SEP. OUTLET COND.	SEP. CONC COND.	RO INLET pH	
11.05.2022 09:23	0	0	0	0	0.63	0.00	393.27	12.38	NORMAL MODE, PRESS START
11.05.2022 09:24	0	0	0	0	0.63	0.00	393.70	12.37	NORMAL MODE, PRESS START
11.05.2022 09:25	0	0	0	0	0.62	0.00	392.84	12.37	NORMAL MODE, PRESS START
11.05.2022 09:26	0	0	0	0	0.63	0.00	393.41	12.36	NORMAL MODE, PRESS START
11.05.2022 09:27	4310	863	3078	0	0.93	0.00	393.56	11.93	SQ31, FILLING IN PROGRESS
11.05.2022 09:28	4358	1429	2859	0	3.02	0.00	392.69	8.45	SQ31, FILLING IN PROGRESS
11.05.2022 09:29	8956	1760	7093	0	6.84	0.00	393.41	7.18	SQ31, START1 (RINSING) IN PROGRESS
11.05.2022 09:30	9408	1786	7820	0	3.81	0.00	393.13	6.52	SQ31, START1 (RINSING) IN PROGRESS
11.05.2022 09:31	10204	2094	8091	231	2.86	0.07	392.55	6.34	SQ31, START3 (PRE RINSE SEPTRON) IN PROGRESS
11.05.2022 09:32	11953	2323	9417	679	0.94	0.08	392.26	6.48	SQ 31, OSMOTRON IN OPERATION
11.05.2022 09:33	11942	2334	9483	703	0.67	0.13	390.81	6.62	SQ 31, OSMOTRON IN OPERATION
11.05.2022 09:34	12036	2353	9490	707	0.65	0.14	354.68	7.20	SQ 31, OSMOTRON IN OPERATION
11.05.2022 09:35	12088	2392	9555	696	0.65	0.13	265.36	8.08	SQ 31, OSMOTRON IN OPERATION

Thank You!

Reach out us at:

Nexion Automation Pvt Ltd

**B-54 2nd Floor, New Krishna Park, Main
Najafgarh Road-New Delhi-110018**

Email: sales@nexionautomation.com

Mobile: +91 98994 80545

Office: 011-4352 8102



**Recognised
System Integrator**

A ROCKWELL AUTOMATION PARTNER